

# Symantec™ Protection Center

Optimized security through integration and automation

## Overview

Symantec™ Protection Center unifies information security management across systems, networks, and data to effectively protect against the inherent risks in today's IT infrastructures. It helps organizations strengthen their security defenses by providing a cohesive view of enterprise security, improving incident response times, and driving greater operational efficiencies.

Through Symantec Protection Center's single Web console, organizations can reduce the complexity in managing a diverse security infrastructure while gaining visibility across the threat landscape. With real-time access to Symantec's Global Intelligence Network, security teams are supported by the largest security threat database for real-time risk detection. Symantec Protection Center enables automated processes that shorten the time from threat identification to remediation through repeatable and coordinated response actions.

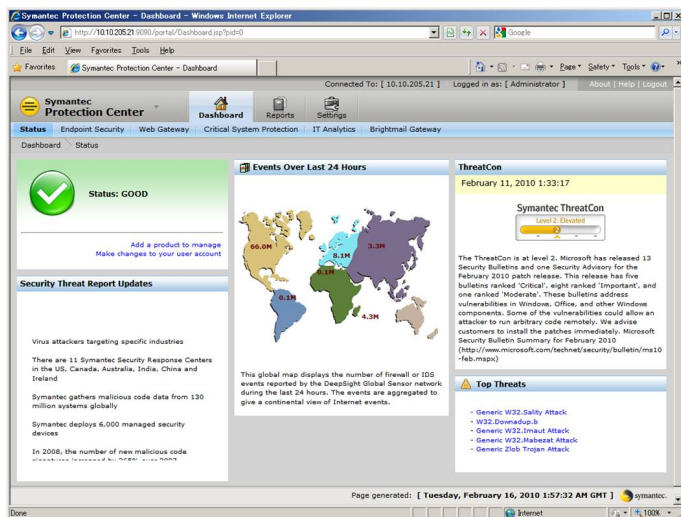
## Centralized access to policy management

Symantec Protection Center provides the flexibility for any administrator to manage their specific security responsibilities from anywhere in the world. It allows administrators to quickly and easily log into one central Web console to manage multiple security products while benefiting from a single sign-on experience. Administrators can view overall status details and product dashboards, as well as run specific reports. To accommodate organizations with different security teams, Symantec Protection Center supports multiple user accounts and provides role-based access across the security landscape.

## End-to-end visibility

Due to the proliferation of individual security products and organizational silos, enterprises often lack a holistic view of their security infrastructure to understand active threats, vulnerabilities, and risks to confidential data. Symantec

Protection Center helps organizations visualize overall status and reduce security gaps with consolidated, real-time access to threat, security, and operational dashboards. In addition to centralized "at a glance" views, Symantec Protection Center also includes access to detailed reports for deeper analysis.



Symantec Protection Center's consolidated dashboards display key details to help security professionals understand the current threat landscape.

## Proactive security response

Process inefficiencies often compromise security by prolonging remediation actions and adding unnecessary costs, resources, and time. Symantec Protection Center enables smart drag and drop workflow capabilities that decrease exposure to targeted threats. Organizations can turn their documented internal policies into repeatable, predictable automation routines utilizing Symantec technologies and 3<sup>rd</sup> party products. Not only are incident response times significantly reduced, but cross-department communications are streamlined and proper change controls are documented to satisfy compliance requirements.

### Unrivaled intelligence

Backed by more than 25 years of experience and Symantec's Global Intelligence Network, Symantec Protection Center encompasses the most extensive sources of Internet threat data in the world to offer comprehensive and up-to-date information. Leveraging the analysis of Symantec security experts, you can stay up to date about malware, phishing, spam, data leakage, and data theft—the entire spectrum of security concerns.

---

### Complete protection

Symantec Protection Center provides single console management of Symantec Protection Suite Enterprise Edition products.

It integrates the following:

- Symantec™ Endpoint Protection
  - Symantec™ Data Loss Prevention
  - Symantec™ Critical System Protection
  - Symantec Brightmail™ Gateway
  - Symantec™ Web Gateway
  - Symantec™ Network Access Control
- 

### Key features and benefits:

#### Unified management and administration

- Includes a Web based, single sign on experience to reduce complexity and provide enterprise wide access.

#### Pinpoint relevant security threats

- Easily visualize and correlate relationships between security events to rapidly identify affected systems.

#### Accelerate time to protection

- Shorten the time from threat identification to remediation through automated actions.

### Increase productivity

- Extend administrative reach by bringing people, process, and information together.
- 

### More information

#### Visit our website

<http://enterprise.symantec.com>

#### To speak with a Product Specialist in the U.S.

Call toll-free 1 (800) 745 6054

#### To speak with a Product Specialist outside the U.S.

For specific country offices and contact numbers, please visit our website.

#### About Symantec

Symantec is a global leader in providing security, storage and systems management solutions to help consumers and organizations secure and manage their information-driven world. Our software and services protect against more risks at more points, more completely and efficiently, enabling confidence wherever information is used or stored.

#### Symantec World Headquarters

350 Ellis St.

Mountain View, CA 94043 USA

+1 (650) 527 8000

1 (800) 721 3934

[www.symantec.com](http://www.symantec.com)